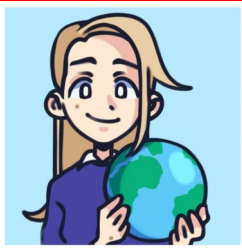


# Scott Primary School—Geography Knowledge Organiser



Topic: Frozen Planet



Year 2—Autumn 2

## Key Vocabulary

Human features	Things that have been built by people for example houses, roads and bridges.
Physical features	Things that are natural that have not been made by people. For example mountains, trees, oceans and plants.
Climate	Is the weather in one area, over a long period of time.
Temperate	Is when weather is changes often. It can be cold and damp in winter and warm and light in summer.
Equator	The Equator is an imaginary circle around Earth.
Glacier	Slowly-moving rivers of ice.
Fjord	An area of water that comes far into land. Fjords look a bit like lakes .

## Important Facts

\*Kenya, England, Svalbard and Peru all have different physical features. For example, plants can not grow and survive in Svalbard due to the cold climate. Some plants can not survive in Kenya due to the dry and hot climate.

\*Svalbard only has 2,400 people living there but in Bedford there are over 170,000 people.

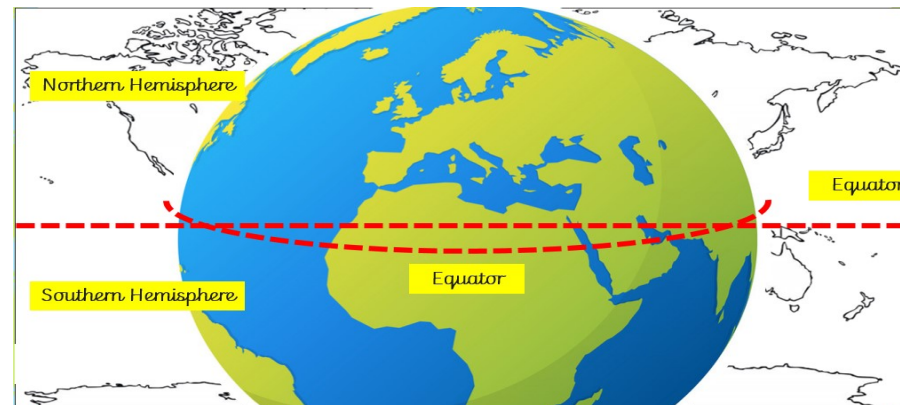
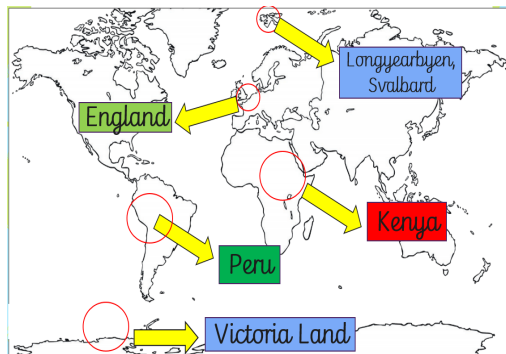
\*England is a country within the continent of Europe.

\*Different parts of the world have different climates.

\*Kenya has a hot and dry climate. England has a temperate climate. Svalbard has very cold climate and Peru has a tropical climate.

\*The equator is an imaginary circle around the Earth It divides Earth into two equal parts: the Northern Hemisphere and the Southern Hemisphere.

\*Plains can be found in Africa but glaciers and fjords can be found in Svalbard.



## Previous Knowledge

Comparing the UK to Kenya.

Name and locate the 7 continents and Oceans.

Exploring the local area using Google Earth.

Used map work to identify key parts of the school.

